

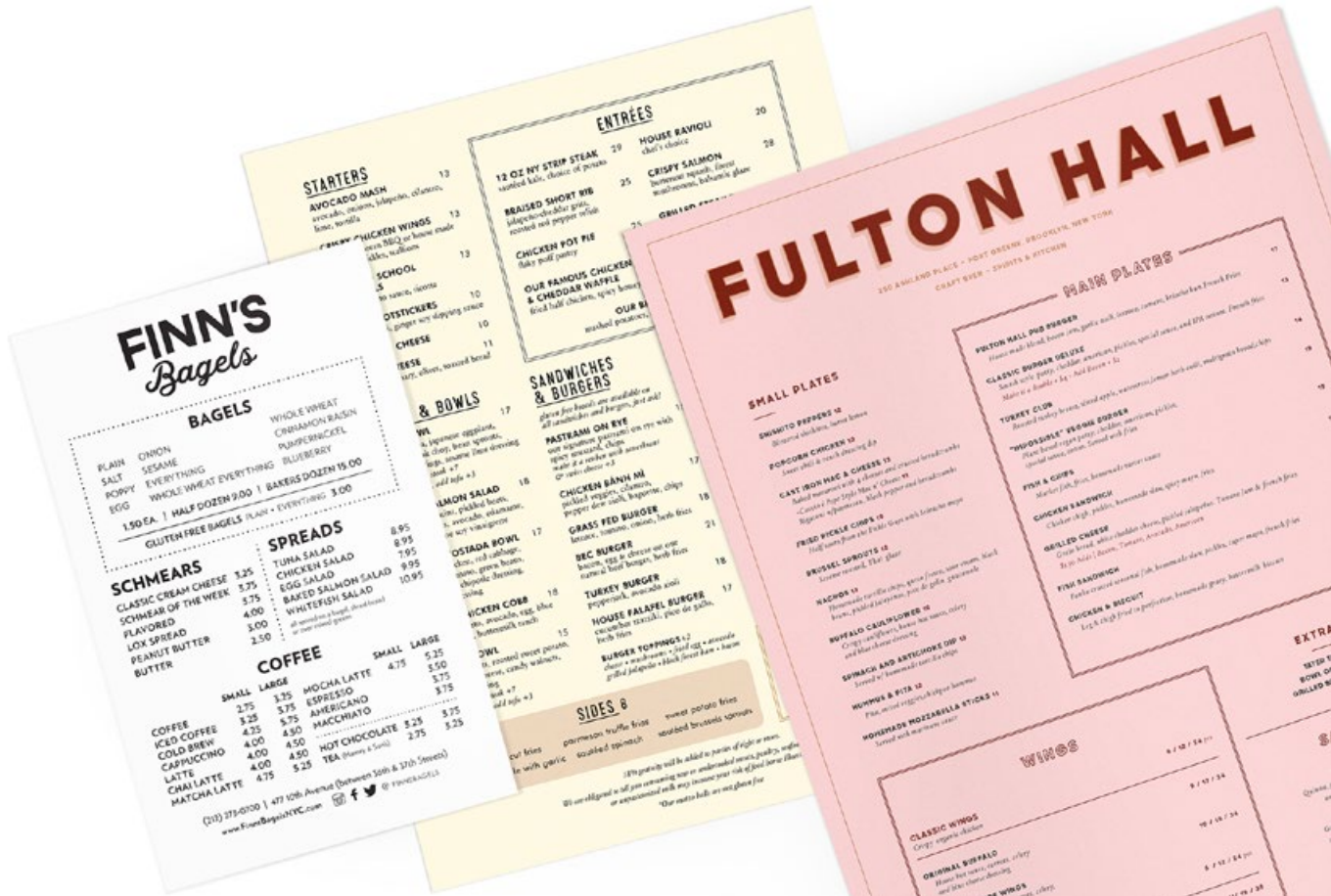


HOSPITALITY RE-OPENING

JUNE 2020

all prices subject to change without notice

SINGLE USE MENUS



SINGLE USE MENUS (DIGITAL PRINTING)

Single use menus are recommended by the CDC. Our menus are safe, sanitary and very economical. Digitally printed on white or pastel paper, same day production available.

5.5" x 8.5" (half letter)	250	500	1,000	2,500
black 1-side	\$12 (4.8¢)	\$19 (3.8¢)	\$33 (3.3¢)	\$75 (3¢)
black 2-sides	\$16 (6.4¢)	\$27 (5.4¢)	\$45 (4.5¢)	\$110 (4.4¢)
color 1-side	\$24 (9.6¢)	\$43 (8.6¢)	\$74 (7.4¢)	\$180 (7.2¢)
color 2-sides	\$40 (16¢)	\$74 (14.8¢)	\$126 (12.6¢)	\$310 (12.4¢)

8.5" x 11" (letter size)

black 1-side	\$22 (8.6¢)	\$38 (7.6¢)	\$66 (6.6¢)	\$158 (6.3¢)
black 2-sides	\$29 (11.6¢)	\$53 (10.6¢)	\$91 (9.1¢)	\$220 (8.8¢)
color 1-side	\$46 (18.3¢)	\$86 (17.2¢)	\$146 (14.6¢)	\$358 (14.3¢)
color 2-sides	\$75 (29.8¢)	\$149 (29.8¢)	\$242 (24.2¢)	\$620 (24.8¢)

11" x 17" (placemat)

black 1-side	\$41 (16.2¢)	\$76 (15.2¢)	\$129 (12.9¢)	\$318 (12.7¢)
black 2-sides	\$56 (22.4¢)	\$106 (21.2¢)	\$179 (17.9¢)	\$443 (17.7¢)
color 1-side	\$89 (35.6¢)	\$172 (34.4¢)	\$289 (28.9¢)	\$717 (28.7¢)
color 2-sides	\$109 (43.6¢)	\$213 (42.6¢)	\$369 (36.9¢)	\$917 (36.7¢)

+ for folding	\$45	\$55	\$70	\$125
---------------	------	------	------	-------

SET-UP CHARGE: included in above pricing with print ready PDF files. File prep is available at a minimal charge.

PRODUCTION TIME: 1-2 business days after proof approval, rush service available

COLOR PAPER OPTIONS

cream	buff
ivory	canary
tan	goldenrod
gray	salmon
orchid	pink
blue	green



SINGLE USE MENUS (OFFSET PRINTING)

Single use menus are recommended by the CDC. Our menus are safe, sanitary and very economical. Offset printed on premium 70# opaque white paper.

5.5" x 8.5" (half letter)	1,000	2,500	5,000	10,000
color 1-side	\$91 (9.1¢)	\$112 (4.5¢)	\$162 (3.2¢)	\$307 (3.1¢)
color 2-sides	\$106 (10.6¢)	\$130 (5.2¢)	\$186 (3.7¢)	\$355 (3.5¢)

8.5" x 11" (letter size)				
color 1-side	\$135 (13.5¢)	\$205 (8.2¢)	\$272 (5.4¢)	\$526 (5.3¢)
color 2-sides	\$147 (14.7¢)	\$221 (8.8¢)	\$299 (6¢)	\$586 (5.9¢)

8.5" x 14" (legal size)				
color 1-side	\$218 (21.8¢)	\$281 (11.2¢)	\$444 (8.9¢)	\$659 (6.6¢)
color 2-sides	\$238 (23.8¢)	\$325 (13¢)	\$455 (9.1¢)	\$798 (8¢)

11" x 17" (placemat)				
color 1-side	\$340 (34¢)	\$444 (17.8¢)	\$558 (11.2¢)	\$696 (7¢)
color 2-sides	\$394 (39.4¢)	\$513 (20.5¢)	\$647 (12.9¢)	\$809 (8.1¢)

+ for folding	\$30	\$50	\$70	\$125
---------------	------	------	------	-------

SET-UP CHARGE: included in above pricing with print ready PDF files - **SEE OUR FILE GUIDELINES FOR OFFSET PRINTING ON PAGE 14.** File prep is available at a minimal charge.

PRODUCTION TIME: 4-5 business days after proof approval, rush service available.

BEVERAGE NAPKINS

5" BEV. NAPKINS 2-PLY

Description to come.

	WHITE	1-2 COLORS	3-4 COLORS
QTY: 36,000	\$795 2.2¢ ea.	\$960 2.7¢ ea.	
60,000	\$1,195 2.0¢ ea.	\$1,360 2.3¢ ea.	
102,000	\$1,930 1.9¢ ea.	\$2,095 2.1¢ ea.	
LIGHT TONES			
QTY: 36,000	\$925 2.6¢ ea.	\$1,095 3.0¢ ea.	
60,000	\$1,375 2.3¢ ea.	\$1,560 2.6¢ ea.	
102,000	\$2,220 2.2¢ ea.	\$2,420 2.4¢ ea.	
DARK TONES			
QTY: 36,000	\$1,045 2.9¢ ea.	\$1,240 3.4¢ ea.	
60,000	\$1,555 2.6¢ ea.	\$1,770 2.9¢ ea.	
102,000	\$2,510 2.5¢ ea.	\$2,725 2.7¢ ea.	

LIGHT TONES: Ivory, Beige, Buttermilk, Dove Gray, Pink

DARK TONES: black, chocolate brown, sun yellow, navy blue, red, burgundy, glittering gold, hunter green

SET UP FEES

- \$45 per color plates fee

PRODUCTION TIMES

- 4-6 weeks.



QR CODE FOR
TOUCHLESS
MENU OPTIONS



GLASS COVERS



FOR MORE F&B SUPPLIES,
VISIT STUDIOINDUSTRIA.COM
AND DOWNLOAD OUR
F&B SUPPLIES PRICE LIST

GLASS COVERS

Glass covers (Stancaps) allow you to reinforce your brand while keeping your glassware sanitary. We can produce your design using either a matte or glossy finish. 1-color to 4-color printing available — even on the inside of the cap. **Blank (no printing) covers are available for quick shipping.**

Here's pricing for a small sampling of available options:

56mm	10,000	20,000	50,000	100,000
matte finish 1-color no bleed	\$339 [3.4¢]	\$661 [3.3¢]	\$1,583 [3.2¢]	\$3,028 [3¢]
matte finish 2-color no bleed	\$349 [3.5¢]	\$681 [3.4¢]	\$1,630 [3.3¢]	\$3,119 [3.1¢]
matte finish 1-color with bleed	\$370 [3.7¢]	\$725 [3.6¢]	\$1,749 [3.5¢]	\$3,376 [3.4¢]
matte finish 2-color with bleed	\$379 [3.8¢]	\$743 [3.7¢]	\$1,800 [3.6¢]	\$3,457 [3.5¢]
gloss 1-color no bleed	\$342 [3.4¢]	\$667 [3.3¢]	\$1,597 [3.2¢]	\$3,057 [3.1¢]
gloss 2-color no bleed	\$352 [3.5¢]	\$687 [3.4¢]	\$1,645 [3.3¢]	\$3,148 [3.1¢]

31 sizes available from 56 mm - 105 mm (pricing here is a small sampling of available options)

56 mm	57 mm	58 mm	58.5 mm	60 mm	62 mm	63 mm	64 mm
65 mm	67 mm	67.5 mm	68 mm	69 mm	69.5 mm	70 mm	70.5 mm
72 mm	74 mm	75 mm	76 mm	79 mm	80 mm	82 mm	82.5 mm
84 mm	86 mm	87 mm	87.5 mm	90 mm	98 mm	105 mm	

75mm	10,000	20,000	50,000	100,000
matte finish 1-color no bleed	\$425 [4.2¢]	\$828 [4.1¢]	\$2,020 [4¢]	\$3,875 [3.9¢]
matte finish 2-color no bleed	\$437 [4.4¢]	\$860 [4.3¢]	\$2,089 [4.2¢]	\$3,992 [4¢]
matte finish 1-color with bleed	\$446 [4.5¢]	\$874 [4.4¢]	\$2,148 [4.3¢]	\$4,133 [4.1¢]
matte finish 2-color with bleed	\$458 [4.6¢]	\$899 [4.5¢]	\$2,182 [4.4¢]	\$4,237 [4.2¢]
gloss 1-color no bleed	\$429 [4.3¢]	\$836 [4.2¢]	\$2,046 [4.1¢]	\$3,910 [3.9¢]
gloss 2-color no bleed	\$441 [4.4¢]	\$861 [4.3¢]	\$2,107 [4.2¢]	\$4,028 [4¢]

SET-UP CHARGE: \$65 per color (1 time plate charge)

PRODUCTION TIME: 6 weeks after proof approval, blank covers ship same day if in stock.

CUSTOM PRINTED BAGS



5.5" x 6" x 8.375"	NATURAL KRAFT	WHITE KRAFT
QTY: 6,000	\$2,070 (35¢ ea.)	\$2,228 (37¢ ea.)
12,000	\$3,330 (28¢ ea.)	\$3,540 (30¢ ea.)
25,000	\$6,250 (25¢ ea.)	\$6,594 (26¢ ea.)



5.5" x 3.25" x 13"		
QTY: 6,000	\$2,168 (36¢ ea.)	\$2,318 (39¢ ea.)
12,000	\$3,465 (29¢ ea.)	\$3,720 (31¢ ea.)
25,000	\$6,469 (26¢ ea.)	\$6,844 (27¢ ea.)



8" x 4.5" x 10.25"		
QTY: 6,000	\$2,385 (40¢ ea.)	\$2,558 (43¢ ea.)
12,000	\$3,720 (31¢ ea.)	\$4,005 (33¢ ea.)
25,000	\$6,688 (27¢ ea.)	\$7,156 (29¢ ea.)



10" x 5" x 13"		
QTY: 6,000	\$2,558 (43¢ ea.)	\$2,708 (45¢ ea.)
12,000	\$4,095 (34¢ ea.)	\$4,410 (37¢ ea.)
25,000	\$7,656 (31¢ ea.)	\$8,125 (33¢ ea.)



10" x 7" x 12"		
QTY: 6,000	\$2,685 (45¢ ea.)	\$2,835 (47¢ ea.)
12,000	\$4,320 (36¢ ea.)	\$4,575 (38¢ ea.)
25,000	\$7,938 (32¢ ea.)	\$8,500 (34¢ ea.)



13" x 7" x 13"		
QTY: 6,000	\$2,753 (46¢ ea.)	\$3,045 (51¢ ea.)
12,000	\$4,455 (37¢ ea.)	\$4,920 (41¢ ea.)
25,000	\$8,281 (33¢ ea.)	\$9,156 (37¢ ea.)



13" x 7" x 17"		
QTY: 6,000	\$3,023 (50¢ ea.)	\$2,682 (45¢ ea.)
12,000	\$4,905 (41¢ ea.)	\$4,416 (37¢ ea.)
25,000	\$9,125 (37¢ ea.)	\$8,150 (33¢ ea.)



14.5" x 9" x 16.25"		
QTY: 6,000	\$3,300 (55¢ ea.)	\$4,118 (69¢ ea.)
12,000	\$5,550 (46¢ ea.)	\$6,360 (53¢ ea.)
25,000	\$10,500 (42¢ ea.)	\$11,625 (47¢ ea.)



16" x 6" x 12"		
QTY: 6,000	\$2,880 (48¢ ea.)	\$3,195 (53¢ ea.)
12,000	\$4,635 (39¢ ea.)	\$5,175 (43¢ ea.)
25,000	\$8,594 (34¢ ea.)	\$9,531 (38¢ ea.)



18" x 7" x 18"		
QTY: 6,000	\$3,465 (58¢ ea.)	\$3,953 (66¢ ea.)
12,000	\$5,640 (47¢ ea.)	\$6,405 (53¢ ea.)
25,000	\$10,469 (42¢ ea.)	\$11,813 (47¢ ea.)



12" x 7" x 12"		
QTY: 6,000	\$2,002 (33¢ ea.)	
12,000	\$3,705 (31¢ ea.)	
25,000	\$6,375 (26¢ ea.)	



SET UP FEES

- plates included on initial order per brand
- price includes 1-color up to 50% ink coverage
- over 50% ink coverage and up to 3 spot colors are available for an additional charge
- printing on all sides including gussets and bottom

FREE SHIPPING AND PLATES

on first time order of your brand

- free freight shipping on reorder of 25,000 or more of same bag size style etc., liftgate service available for an additional charge

OPTIONS

- standard handle colors are beige, red, navy, black
- additional colors available

PRODUCTION TIMES

- Approx. 5 weeks production time upon proof approval, some special options and large orders may add to production times

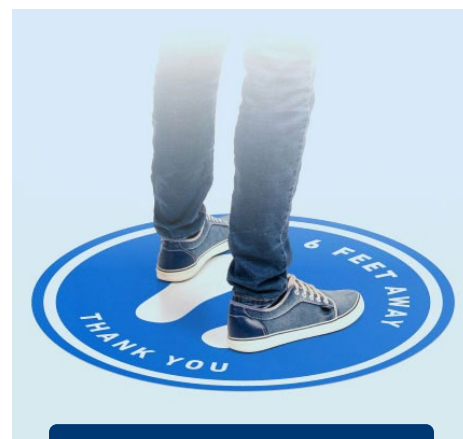
WINDOW CLINGS

Near photo quality for use on glass or smooth surfaces, can be mounted on the inside or outside of the surface and can be used indoors or outdoors, printed on a clear glossy surface. Available in white, clear and clear with white mask (for opaque colors).

	white	clear	clear w/white mask
PRICE PER sq. ft.	\$3.50	\$4.50	\$4.90

PRODUCTION TIME: 3-4 business days after proof approval

SIZE: 12" x 12" up to 58" x 120"



WE'LL PRINT YOUR DESIGN
OR USE OUR DESIGN SERVICES
STOCK DESIGNS AVAILABLE

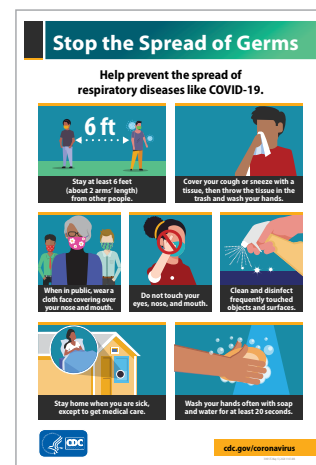
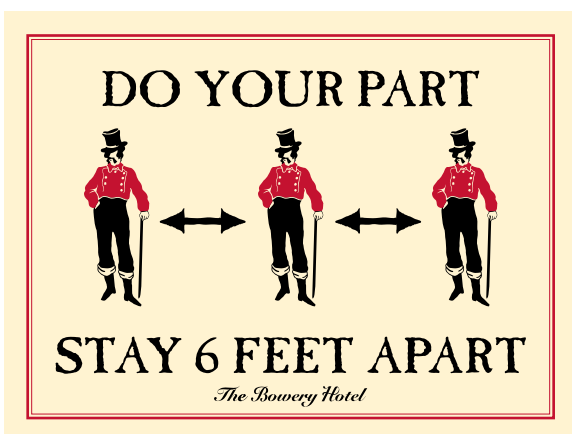
FLOOR SIGNS

4 mil flexible vinyl is great for indoor use on dry, clean and untextured floors. Heavy Duty Outdoor is rugged with a textured surface for indoor or outdoor use.

	econo vinyl	textured vinyl	HD Outdoor	add'l for contour cut
PRICE PER sq. ft.	\$4.50	\$6.50	\$11.50	\$0.95

PRODUCTION TIME: 4-5 business days after proof approval

SIZES: 12" X 12" to 50" X 120" rectangle, plus 12", 24", 36", 48" dia. circle shapes, contour cutting available. Econo vinyl is available in rectangle or above stated circle sizes only.



SAFETY SIGNS

Near photo quality, bright colors for indoor or outdoor use, 2-side printing available for additional charge.

	coroplast	0.015" styrene	0.125" sintra (PVC)
PRICE PER sq. ft.	\$2.75	\$4.80	\$7.50

PRODUCTION TIME: 3-4 business days after proof approval

SIZES: vinyl: 12" X 12" to 48" X 96" rectangle, additional charge for small sizes of coroplast

Face coverings are
required per posted
local/state order
while you shop.

All of our associates
are required to wear a
face covering or mask
while working.



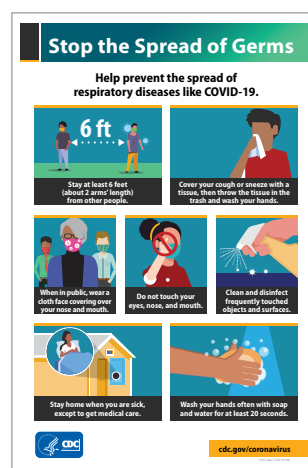
BANNERS

Let 'em know you're open with economical banners for indoor or outdoor use. Edge finishing, grommets, pole pockets and wind slits available for additional charge.

	8 oz. mesh	13 oz. vinyl	15 oz. vinyl
PRICE PER sq. ft.	\$1.95	\$1.95	\$2.95

PRODUCTION TIME: 3-4 business days after proof approval

SIZES: vinyl: 12" X 12" to 48" X 96" rectangle, additional charge for small sizes of coroplast



SIGN CARDS

Economical board signs, digitally printed on heavy card stock.

	1-10	11-49	50 and up
9" x 12"	\$0.75	\$0.65	\$0.49
12" x 18"	\$1.95	\$1.15	\$0.95

PRODUCTION TIME: 1-2 business days after proof approval

SIZES: 12" X 18" for edge to edge printing, 13" x 19" for printing withing 0.5" from edges

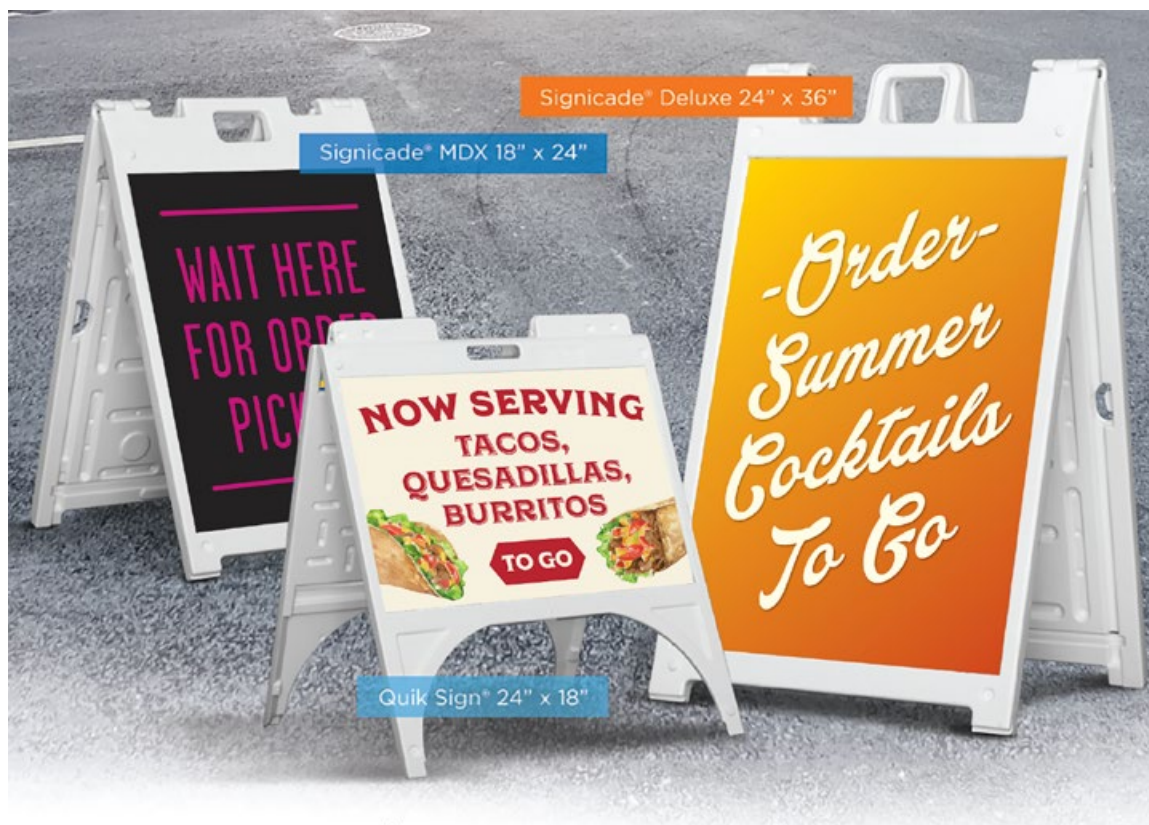
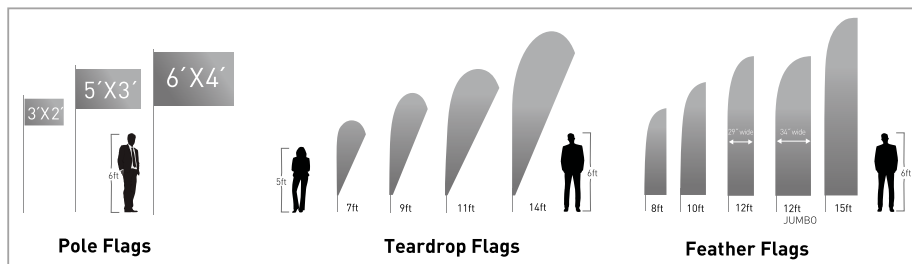


FLAGS

Dye sublimation printing on 3 oz. polyester for vivid photo quality images. Pole, teardrop and feather flags available in several popular sizes. Pricing includes outdoor stand. Indoor stand additional \$15.

2' x 3' pole	8' or 10' feather	7' or 9' teardrop
\$29.50	\$98.50	\$98.50

PRODUCTION TIME: 3-4 business days after proof approval.



**SIGNICADE®
MDX**
18" X 24"

\$119 /EA

QUICK SIGN®
24" X 18"

\$99 /EA

**SIGNICADE®
DELUXE**
24" X 36"

\$199 /EA

MASKS



3-PLY FACE MASK

These masks offer great daily basic protection. Bulk packed 50 per box. 6.7" w x 3.75" h. Please note, this is NOT a medical rated mask and is meant for everyday personal use.

	500	1,000	5,000	10,000
	\$276 (55.2¢)	\$495 (49.5¢)	\$2,370 (47.4¢)	\$4,640 (46.4¢)
PRICE INCLUDES GROUND SHIPPING				

2- ply design

pima cotton

machine washable

stock colors

white	black	grey	khaki	hunter green	sky blue	smokey blue	royal blue	navy blue	red
-------	-------	------	-------	--------------	----------	-------------	------------	-----------	-----

WASHABLE COTTON FACE MASK

Double ply design with choice of cotton colors above, inside fabric made from white pima cotton. Machine washable. 8" wide x 6" high with three 1/2" pleats, ear strap length 4.5" long.

	250	500	1,000	5,000
Blank Mask	\$4.69 ea.	\$3.99 ea.	\$3.79 ea.	\$3.29 ea.
1-2 color imprint	-	-	\$4.75 ea.	\$3.95 ea.

PRODUCTION TIME: Black, navy and gray ship in 2 days, other colors ship in 10 days. 1 or 2-color custom imprint ship in 15 business days after proof approval.

BLENDDED CLOTH FACE MASK

Foldable, 2 layer one size fits all cloth mask that is 100% polyester, washable and reusable. Price includes 1 position, 1 color silkscreen or embroidery. Available in black, blue, and silver.

	100	250	500	1,000
MASK-CDX	\$2.95 ea.	\$2.45 ea.	\$2.30 ea.	\$2.15 ea.

SET-UP CHARGE: \$40

IMPRINT: 2" w x 2" h

PRODUCTION TIME: 15 days after proof approval, rush service available.



FULL COLOR CLOTH MASK

Foldable, 2 layer one size fits all cloth mask that is 100% polyester, washable and reusable. Price includes full color imprinting.

	250	500	1,000	2,500
202948	\$4.40 ea.	\$2.95 ea.	\$2.15 ea.	\$1.99 ea.

SET-UP CHARGE: \$40

IMPRINT: 7.8" w x 5.5" h

PRODUCTION TIME: 7 to 10 days after proof approval.



FULL COLOR CLOTH MASK

Foldable, 2 layer one size fits all cloth mask that is 100% polyester, washable and reusable. Price includes 1 position, 1 color silkscreen or embroidery. Available in black, blue, and white.

	100	250	500	1,000
MASK-CD	\$1.75 ea.	\$1.55 ea.	\$1.45 ea.	\$1.35 ea.

SET-UP CHARGE: \$40

IMPRINT: 3.1" w x 2" h

PRODUCTION TIME: 10 to 15 days after proof approval.

1 OZ. HAND SANITIZER BOTTLE

62% alcohol content, FDA approved. 1 oz. bottle with a flip top cap.
Price includes 1 color 1 location imprint, full color imprint available.

	100	250	500	1,000
SANIT30	\$1.69 ea.	\$1.59 ea.	\$1.53 ea.	\$1.49 ea.

SET-UP CHARGE: \$45 1-color, 4-color process printing \$75

IMPRINT: 0.75" w x 1.5" h

PRODUCTION TIME: 20 days after proof approval



2 OZ. HAND SANITIZER BOTTLE

62% alcohol content, FDA approved. 2 oz. bottle with a flip top cap.
Price includes 1 color 1 location imprint, full color imprint available.

	100	250	500	1,000
SANIT60	\$2.30 ea.	\$1.85 ea.	\$1.80 ea.	\$1.75 ea.

SET-UP CHARGE: \$45 1-color, 4-color process printing \$75

IMPRINT: 0.875" w x 1.75" h

PRODUCTION TIME: 20 days after proof approval



3.2 OZ. HAND SANITIZER GEL POUCH

62% alcohol content. 3.2 oz. disposable pouch with a security white twist off cap.
Price includes full color imprint. Made in the USA.

	100	250	500	1,000
SANIT100	\$3.80 ea.	\$3.55 ea.	\$3.45 ea.	\$3.40 ea.

SET-UP CHARGE: \$75

IMPRINT: 1.5" w x 2" h

PRODUCTION TIME: 7 days after proof approval



1.8 OZ. GEL W/CARABINER

62% alcohol content, FDA approved. 1.8 oz bottle with a flip top cap and matching carabiner. Price includes 1 color 1 location imprint.

	100	250	500	1,000
SANIT2001	\$3.10 ea.	\$2.80 ea.	\$2.60 ea.	\$2.50 ea.

SET-UP CHARGE: \$45 1-color

IMPRINT: 1" w x 1.57" h

PRODUCTION TIME: 20 days after proof approval

2 OZ. HAND SANITIZER SPRAY

62% alcohol content. 2 oz. bottle with a white or clear sprayer cap.
Price includes full color imprint. Made in the USA.

	100	250	500	1,000
SANIT04	\$2.90 ea.	\$2.60 ea.	\$2.50 ea.	\$2.40 ea.

SET-UP CHARGE: \$75

IMPRINT: 1.5" w x 1.75" h

PRODUCTION TIME: 7 days after proof approval



ANTIBACTERIAL WIPES

Convenient individual pouch. Price includes full color imprinting.

	250	500	1,000	2,500
P2-601PS	\$0.55 ea.	\$0.52 ea.	\$0.49 ea.	\$0.48 ea.

SET-UP CHARGE: \$45

IMPRINT: 3.55" w x 1.9" h.

PRODUCTION TIME: 3 days after proof approval



ANTIBACTERIAL 15 WIPES POUCH

Convenient pouch includes 15 individual wipes. Price includes full color imprinting. Pouch comes in black, blue, green, orange, red, silver, white, teal green, pink, purple, and yellow. Temporarily out of stock arrival date is end of August.

	250	500	1,000	2,500
SP105	\$1.05 ea.	\$0.99 ea.	\$0.95 ea.	\$0.89 ea.

SET-UP CHARGE: \$45

IMPRINT: 2.75" w x 1.25" h;

PRODUCTION TIME: 3 days after proof approval

ANTIBACTERIAL 30 WIPES CONTAINER

Antibacterial wet wipes comes in a convenient container which includes 30 individual wipes. Price includes full color imprinting. Cap comes in black, blue, green, orange, pink, purple, red, teal and yellow.

	250	500	1,000	2,500
P2-441PS	\$1.26 ea.	\$1.15 ea.	\$1.10 ea.	\$1.05 ea.

SET-UP CHARGE: \$45

IMPRINT: 5.75" w x 2.09" h

PRODUCTION TIME: 3 days after proof approval



10 WIPES RE-SEALABLE POUCH

Alcohol-free, single use, disposable antibacterial sanitizer wipes in a re-sealable pouch. Price includes full color imprinting. Active Ingredient: Benzalkonium Chloride 0.3%. Other ingredients: water, Propylene Glycol, Tocopherol, Kathon. Sanitizer kills 99% of germs when used correctly. Features a light lavender scent. Pouch comes in lime green, red, reflex blue, and white.

	225	600	1200 2	600
PC190	\$1.52 ea.	\$1.36 ea.	\$1.26 ea.	\$1.18 ea.

SET-UP CHARGE: \$45

IMPRINT: 3.25" w x 1.625" h

PRODUCTION TIME: 3-5 days after proof approval

HAND SANITIZER GEL PACKET

Single use gel packets contain 62% alcohol-based hand sanitizer. Single use, disposable packet. Available in white or silver packets. Portable – easily fits in purse or pocket.

	1,000	2,500	5,000	10,000
ABL1430-K	\$0.69 ea.	\$0.66 ea.	\$0.62 ea.	\$0.56 ea.

SET-UP CHARGE: \$55

IMPRINT: 1.625" w x 1.75", full color label also available

PRODUCTION TIME: 20-25 days after proof approval



1 OZ. HAND SANITIZER BOTTLE

Alcohol based hand sanitizer comes in a clear 1 oz. bottle with disc cap lid and features a full color decoration label. FDA compliant and made in the USA.

	500	1,000	2,500	5,000
W606	\$1.49 ea.	\$1.46 ea.	\$1.43 ea.	\$1.41 ea.

SET-UP CHARGE: \$55

IMPRINT: 1.05" w x 1.125" h

PRODUCTION TIME: 7-10 days after proof approval



0.33 OZ. HAND SANITIZER MINI CREDIT CARD SPRAY

Small, credit card shaped (.33oz) hand sanitizer spray with 62% alcohol content.

	250	500	1,000	2,500
PT1074	\$1.19 ea.	\$1.16 ea.	\$1.12 ea.	\$1.09 ea.

SET-UP CHARGE: \$55

IMPRINT: 2" w x 1.5" h

PRODUCTION TIME: 5 days after proof approval

AVAILABLE SCENTS: iced pear or vanilla

1.35 OZ. HAND SANITIZER

Unscented 1.35 oz. mini hand sanitizer bottle with 62% alcohol content.

Full color digital label.

	200	500	1,000	2,500
	\$2.06 ea.	\$1.66 ea.	\$1.49 ea.	\$1.35 ea.

SET-UP CHARGE: \$45

PRODUCTION TIME: 7-10 business days after proof approval



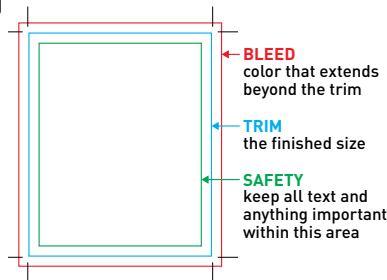
FILE SUBMISSION GUIDELINES FOR OFFSET MENUS

PLEASE REVIEW YOUR DOCUMENT BEFORE YOU SEND IT TO US FOR PRINT - We've prepared these guidelines to help ensure the printing process goes as smoothly as possible. In many cases, we can help if you require assistance with preparing your files for print. However, we encourage you to pay particular attention to the following guidelines to avoid print problems, additional charges, and processing delays.

SUPPORT FILES - It is advisable to include the layout file (InDesign, Illustrator, etc.) plus all fonts and linked images). Use linked images, do not embed images.

SIZE - Design your print file in its intended finished size. Files will be printed in the size they are ordered, so it is necessary that your print files be created for the final trim size.

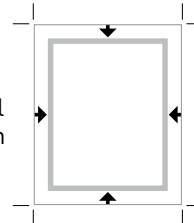
TRIM, BLEED & SAFETY - The **TRIM SIZE** is the final size of your printed piece. Include a **BLEED AREA** of 1/16" (0.0625") in your document that will be trimmed off during the finishing process. Allow a **SAFE AREA** of at least 1/8" (0.125") on all sides in your design to contain all text and important graphics.



COLORS - Files should be saved in CMYK format. Using Pantone or RGB or LAB colors may result in undesirable results. Pantone colors are useful for offset printing as a spot color and can be helpful when printing digitally. Keep in mind that there may be a noticeable color shift in the printed design when converted to CMYK when printing digitally.

Color proof: when color matching is a concern, please let us know ahead of time and we can help you plan for the best results. PDF proofs are not suitable for color matching, only for content verification.

BORDERS - When you use a border in your design, we recommend having the border at least 1/4" (0.25") from all sides. During the cutting process, even the slightest paper shift may result in undesirable results.



SOLID BLACK - Large solid black areas should be composed as a combination of C 60%, M 40%, Y 40%, and K 100%. If a large area is set just 100% black it may appear as a dark gray in the printed piece. Keep in mind that many layout applications set 100% black to automatically overprint which may result in undesirable results.

PRE FLIGHT - All files are reviewed prior to printing. If we see a problem we will notify you and make recommendations to fix any problems. This service is free of charge.

WE CAN DO IT FOR YOU - If you do need us to take your near ready files and make them press ready we can do so at an affordable rate. Basic one-side documents are \$25, two-side documents are \$35. Just send us the layout file plus all linked graphics, fonts etc. We will provide you with a high res PDF for your review prior to printing.

NOTE: Pre flight and file prep service does NOT include proofreading. If you require this service just ask.

RIGHT TO REFUSE

Studio Industria reserves the right to use its sole discretion in refusing to print anything it deems improper or known to be illegal. We are not liable for any damages resulting from unwitting violation of copyright laws or illegal use of trade names or slogans. The client guarantees the legal title of all matter submitted to Studio Industria for printing and/or publication.

LIABILITY

Studio Industria's liability shall be limited to the stated selling price to the customer of any defective goods, and shall in no event include special, consequential, incidental, indirect or similar damages, including without limitation, lost profits. Studio Industria warrants that every product manufactured by it meets industry standard for such product and is free of any material defect in workmanship. IT IS EXPRESSLY AGREED THAT THIS WARRANTY IS IN LIEU OF ALL WARRANTIES OF FITNESS FOR PARTICULAR USE AND MERCHANTABILITY. Studio Industria makes no other warranty and no actions or words of Studio Industria or its officers, employees or agents shall constitute a warranty.

INDEMNIFICATION

The customer represents that it has the legal right to produce all printed materials ordered from Studio Industria. In the event that a charge, claim or demand, or arbitration, action or proceeding (collectively, a "Claim") is made or commenced against Studio Industria based upon, relating to or arising from the alleged wrongful acts of the customers, or alleging that the printing performed or product produced by Studio Industria ordered by the customer: (a.) infringes any copyright, patent or other proprietary right of any person; or (b.) contains matter that is libelous, slanderous, defamatory, scandalous or obscene, the customer shall indemnify and hold Studio Industria harmless from and against any loss, damages, cost and expense arising from or related to the Claim including without limitation; (1.) defending Studio Industria against any such Claim (2.) paying any judgment or award against the customer; and (3.) reimbursing Studio Industria for any legal fees and expenses it reasonably incurs in responding.

WORKMANSHIP GUARANTEE

We guarantee all orders to be free of defects in workmanship. If any order does not match the generally accepted trade/industry standards, we will reprint the order when available.

SHIPPING AND DELIVERY

Charges for delivery/shipping of printing and supplies from Studio Industria are not included in quotations unless specified. Because shipping carriers are beyond our control, Studio Industria is not responsible for delays and/or damage incurred during shipping.

Studio Industria nor our shipping carriers are liable for any weather related delays as this would be beyond our control. Title for finished work passes to the customer upon delivery to the carrier at shipping point. Standard shipments are insured for the invoiced amount.

CLAIMS

Claims for defects, damages, or shortages must be made by the client in writing no later than 5 calendar days after delivery. If no such claim is made, Studio Industria and the client will understand that the job has been accepted. By accepting the job, the client acknowledges that Studio Industria's performance has fully satisfied all terms, conditions and specifications. For legal purposes, the venue for any dispute shall be Queens, New York.

CHANGES TO OUR POLICY

Studio Industria may change, modify, add or remove portions of this policy at any time, and any changes will become effective immediately upon being posted unless we tell you otherwise. This policy was last changed November 18, 2019.